

# Conduct with dogs

*... what you should know*

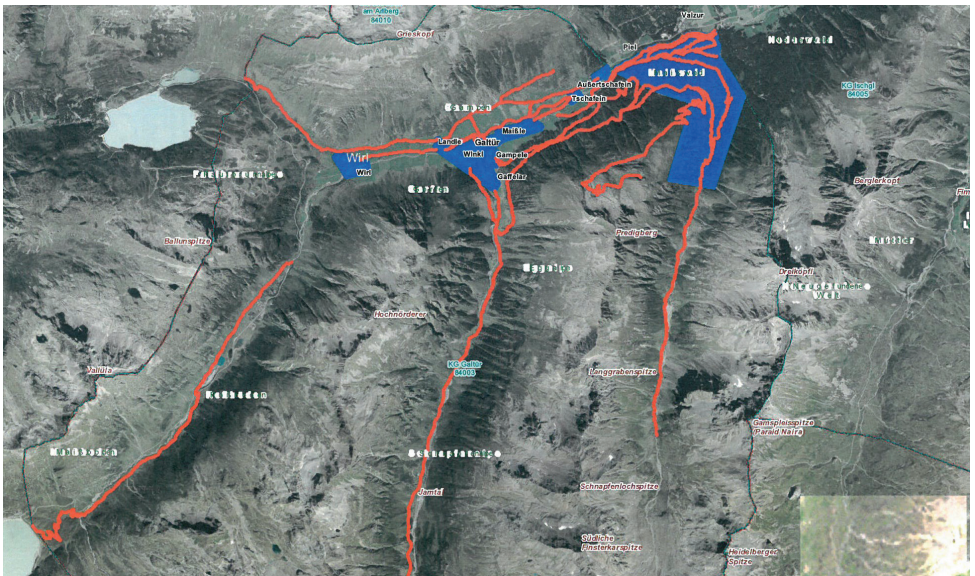
So you and your four-legged friend get to enjoy your holiday to the full in the Paznaun region, we would ask you to adhere to these specific guidelines and rules particularly on hiking paths and trails which proceed through private property, for which we ask you to get permission from the owner of the property. To be able to continue to offer you award-winning and quality-approved hiking path network, we would ask you to respect others and the natural surroundings.

On the pages that follow there is an overview of the dog leash regulations for the Paznaun region. Please pay attention to them.

# Rules and obligations for dog owners



**Leashes are compulsory on designated areas (shown in blue in the picture) and on public thoroughfares (shown in red in the picture)**

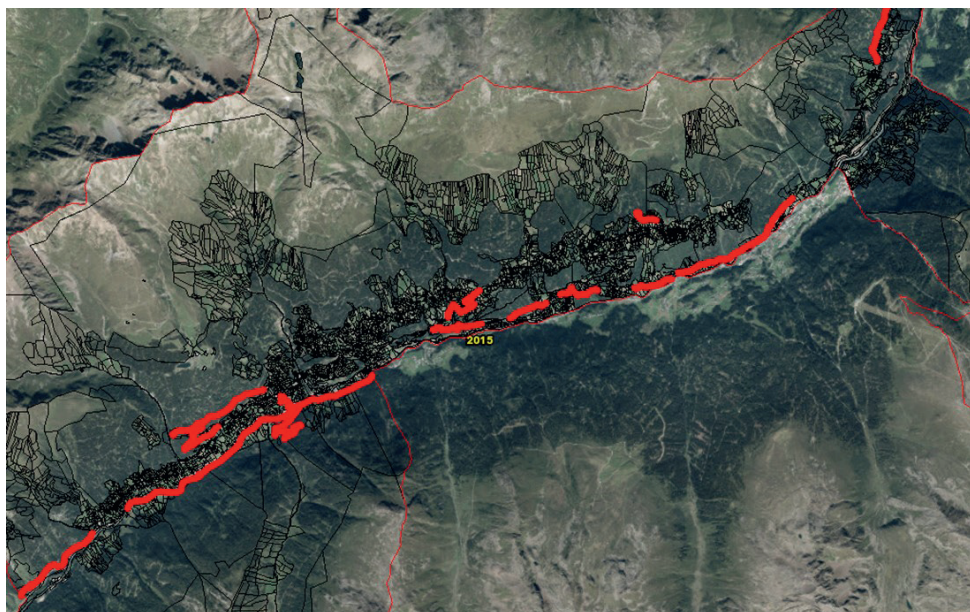


**In the winter months, start of December until the end of April, leashes are compulsory on all trails and winter hiking paths – as per the current trail plan for Paznaun – Ischgl tourism association.**

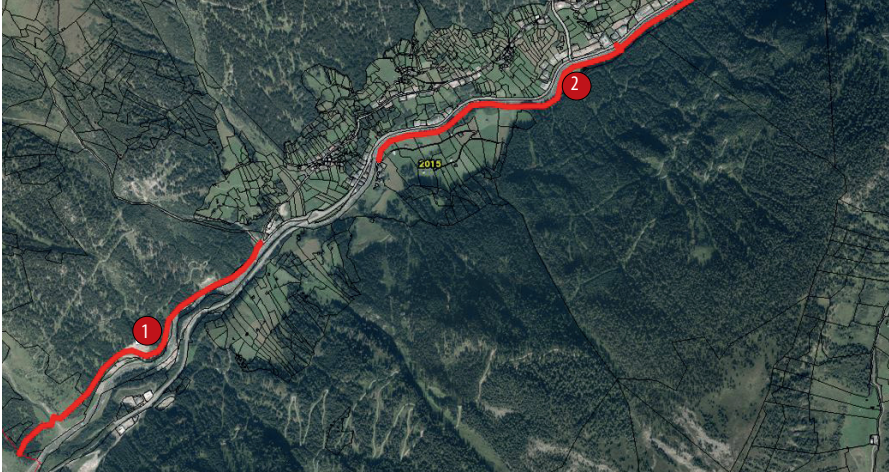
# Rules and obligations for dog owners



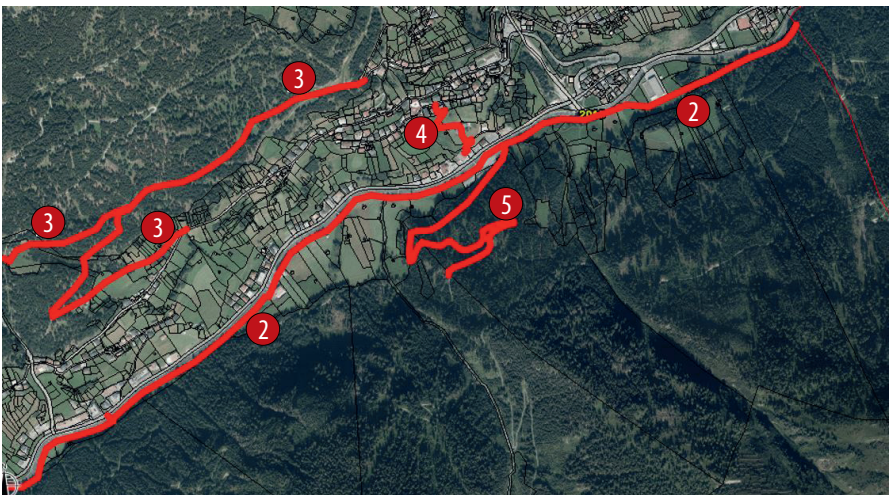
**Please note that leashes are compulsory in the pictures shown below  
(designated red)!**



# Rules and obligations for dog owners

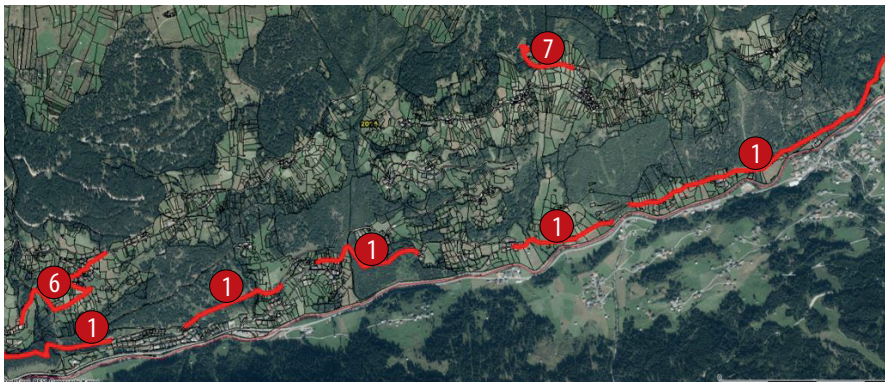


- ① Alter Talweg – starting from the community border to Ischgl to the municipal road to ‚Ulmicher Säge‘
- ② Winter hiking path – starting in Nederle heading out of the valley to the community border of See

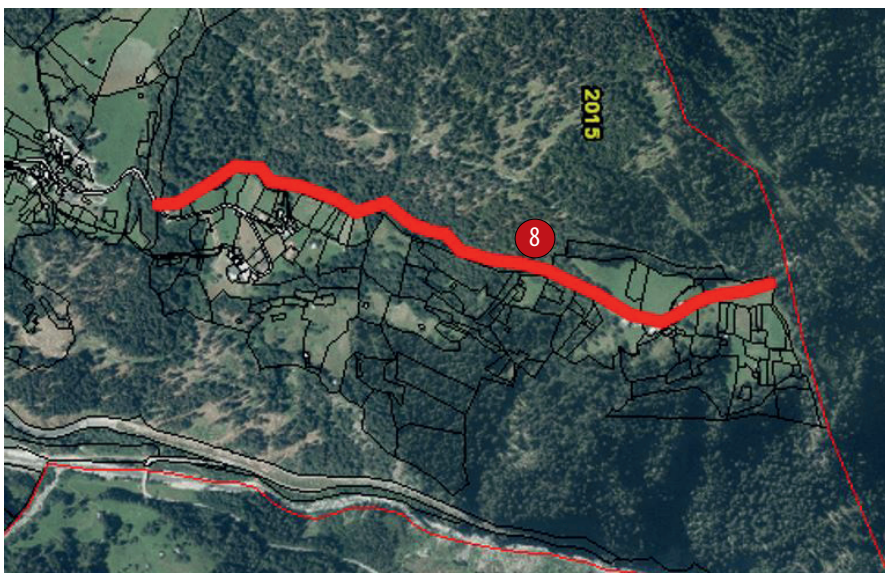


- ③ Municipal road from Höfer-Bachli (junction for the toboggan trail) to Ruhestein Chapel and Kuhlöcherweg to the connection to Egger Weg
- ④ Kappi Cable Cars VIA Schönwies to the toll houses
- ⑤ Kohlplatz Bridge to Rotweg Chapel
- ② Winter hiking path

# Rules and obligations for dog owners



- ⑥ Path from Althof to the former Perpater Säge
- ① Alter Talweg from Ballestadele, Holdernach settlement, Holdernach, Seßebene to Lahngang ( See group)
- ⑦ Path from the returning municipal road to Außerlangsthei heading for Moosboden (including Moosboden)



- ⑧ Path from the former Glitt school to the hamlet of Falgenair

# Rules and obligations for dog owners



**Please note that in the district of See dogs must be kept on a lead at areas outside all buildings**



**Please note that the obligation to wear a leash or a muzzle in the municipality of Pians applies in the following pictures (shown in red)!**

# Rules and obligations for dog owners



Fußballplatz



Spielplatz

# Rules and obligations for dog owners



Volksschule



Kindergarten



# Rules and obligations for dog owners



Vor der Pfarrkirche



Bereich Mittelschule

# GASSI-SYSTEM PAZNAUN

Dog stations for removing and disposing of gas bags

We adore dogs – but not their droppings. For that reason, we have set up an extensive walk system in Paznaun along the hiking paths and trails, to prevent the pasture areas from being defiled. Please help to keep our hiking paths and trails clean and remove your dog's droppings.

## FINES

### COMPULSORY USE OF LEASHES:

In the above-listed areas leashes are compulsory – without exception, even for very gentle and small dogs. Negligence in this regard can cost the owner a fine of up to € 500.

### DOG FAECES:

If left behind, reckon on receiving a fine of up to € 2000.

**The obligation to remove dog faeces applies at all times and in every location!**



# Conveyance on the cable cars

## Galtür cable car:

- » **Summer & Winter:** Conveyance of dogs in gondolas and chairlifts is only permitted when they are kept on a lead and have a muzzle. It is prohibited to let dogs roam freely.

## Ischgl cable car:

- » **Summer:** Conveyance of dogs is prohibited in chairlifts. When they are wearing a muzzle and are kept on a leash, transport is available with the Silvrettabahn, Fimbabahn and the Twinliner. It is prohibited to let dogs roam freely.
- » **Winter:** Conveyance of dogs is only permitted when they are wearing a muzzle or are on a leash in the Silvrettabahn, Fimbabahn and Pardatschgradbahn. Conveyance of dogs on the chairlifts is not permitted. Dogs are not permitted to roam freely on pistes.

## Kappl cable car:

- » **Summer & Winter:** Conveyance of dogs in gondolas and chairlifts is only permitted when they are wearing a muzzle and are kept on leash. It is prohibited to let dogs roam freely.

## See cable car:

- » **Summer:** Transport of dogs is not permitted in the gondola without a muzzle and a leash.
- » **Winter:** Conveyance of dogs in gondolas and chairlifts is only permitted when they are wearing a muzzle and are kept on lead. Note: For conveyance in chairlifts, please enquire with cable car staff beforehand.
- » It is prohibited to let dogs roam freely (winter & summer).



# Conveyance in public transport

- » Dogs wearing a **bite-proof muzzle** can be carried free of charge, when they are able to be accommodated without disturbing or impeding other passengers.
- » Small dogs must be carried, while large dogs are to be kept on a short leash.
- » The passenger is to ensure that dogs do not occupy seats. In the event of a bus being full, the driver will refuse carriage.

